

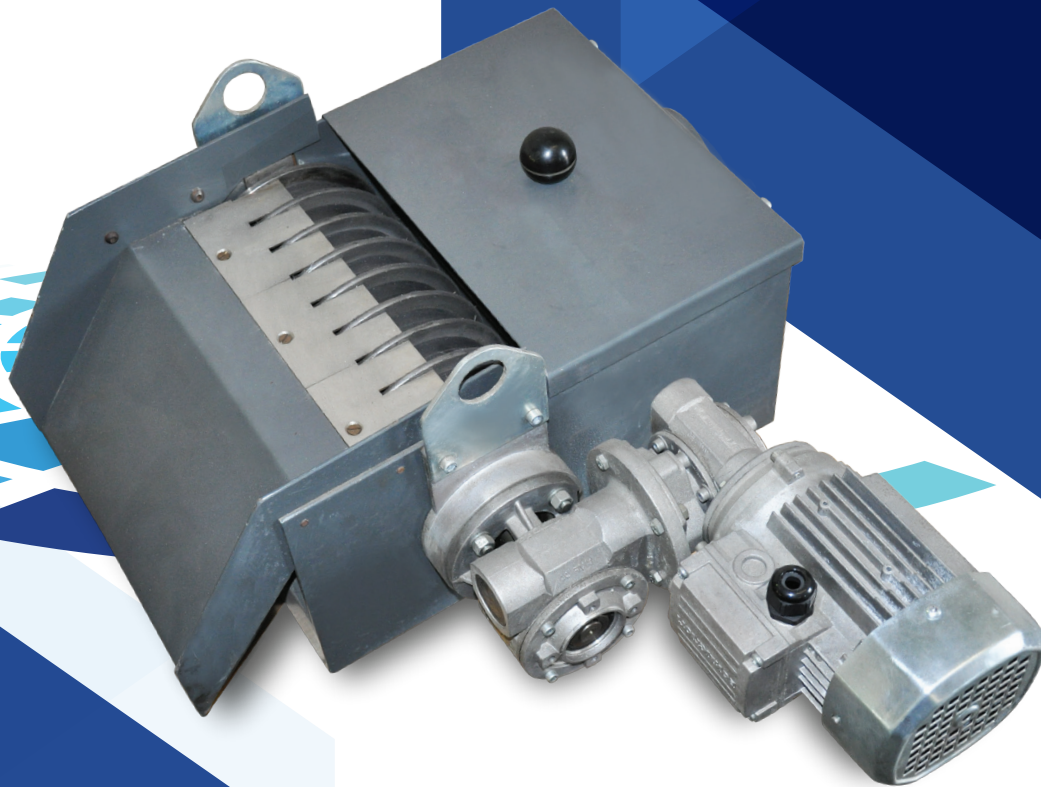
Tel: +44 (0)1484 400200  
sales@cromar.co.uk

FREDERICK CROWTHER AND SON LTD



EST 1955

# Magnetic Separator



“Reliable swarf  
and coolant  
management”

## Applications

The magnetic separator usually runs off the system control coming on directly when the system is powered up. Usual practice is to have the drum continually running on a side stream function where coolant is being continually polished through the magnetic box assembly.

# How it works...

Coolant is pumped via a feed pump from the clean tank to the magnetic filter, which sits above the super clean tank. Coolant is pumped in to the drum box at a controlled flow relevant to the sizing of the unit. Dirty coolant forced in close proximity to the Magnetized drum has its particles stripped and held on the drum where they are scrapped off in to a sludge bin.

FREDERICK CROWTHER AND SON LTD



EST 1955

**Frederick Crowther & Son Ltd**  
Locksley Works,  
Armytage Road Industrial Estate,  
Armytage Road, Brighouse,  
West Yorkshire, HD6 1QF  
Tel: +44 (0) 1484 400200  
Fax: +44 (0) 1484 728088

**Cromar Metal Products Ltd**  
Unit 2 & 3 Guards Road Industrial Estate,  
Guards Road, Coldstream, TD12 4EE  
Tel: +44 (0) 1890 883139  
Fax: +44 (0) 1890 882944  
[www.cromar.co.uk](http://www.cromar.co.uk)